



Bathing establishment Fact Sheet

Bathhouse name	Il Settebello
Address	Viale della Vittoria n. 56
City	Marina di Cecina (LI)
Contacts	+39 0586 620424 info@bagnoilsettebello.it
Website	https://www.bagnoilsettebello.it/

TESTED BY: [Handy Superabile - Social Promotion Association](#) in summer 2023

Please note The following information refers to the verification date shown at the bottom of each card. **The Association** is not responsible for any significant changes made by the property after the visit.

Summary

Bathing establishment Fact Sheet.....	1
Arrival at the facility	2
Private/public parking.....	2
Pathway from the parking lot to the main entrance	2
Reception.....	3
Bar/restaurant	4
Internal Pathways and common services	5
Internal Pathways.....	5
Toilet and shower accessible to guests with reduced mobility.....	6
Changing room.....	9
Beach.....	10
Children's play area.....	11
Swimming pool.....	11
Doctors' Offices/Healthcare Facilities	11

Project carried out with the contribution of the





Arrival at the facility

Private/public parking

Presence of private parking	NO
Type of private car park	Not present
Presence of parking space reserved for people with disabilities	NO
Public parking nearby	YES
Type of public car park	asphalt
	

Pathway from the parking lot to the main entrance

Pathway from the car park to the entrance	by ramp length 76 cm, width 221 cm, gradient 7.1%
There are markers and tactile maps	NO
Usable door/entrance width	more than 90 cm





Reception

Umbrella booking system	<input type="checkbox"/> Via web <input checked="" type="checkbox"/> By phone <input checked="" type="checkbox"/> On-site
Presence of multilingual staff	YES
Presence of plant plan with key to services available	YES
Presence of visuo-tactile map	NO
Bulletin board/information panels at an average height of 130 cm in a well-lit area and font size at least 14 dpi with a contrast ratio greater than 4.5:1	YES
The staff attended training courses on welcoming people with different disabilities	NO





Bar/restaurant


Type of venue	Restaurant
Access to the premises	Flat
Usable door/entrance width	more than 90 cm
Bar counter	more than 100 cm
Types of tables	4- legged
Space underneath the tables from the floor	more than 65 cm
Multilingual menu	YES
Menus with large print fonts	NO
Braille menu	NO
Table service for people with disabilities	YES
Availability of gluten-free food	<input type="checkbox"/> bread <input type="checkbox"/> pasta <input type="checkbox"/> biscuits <input checked="" type="checkbox"/> ice cream <input type="checkbox"/> Pre-packaged foods



Type of venue	Snack bar
Access to the premises	Flat
Usable door/entrance width	more than 90 cm
Bar counter	more than 100 cm





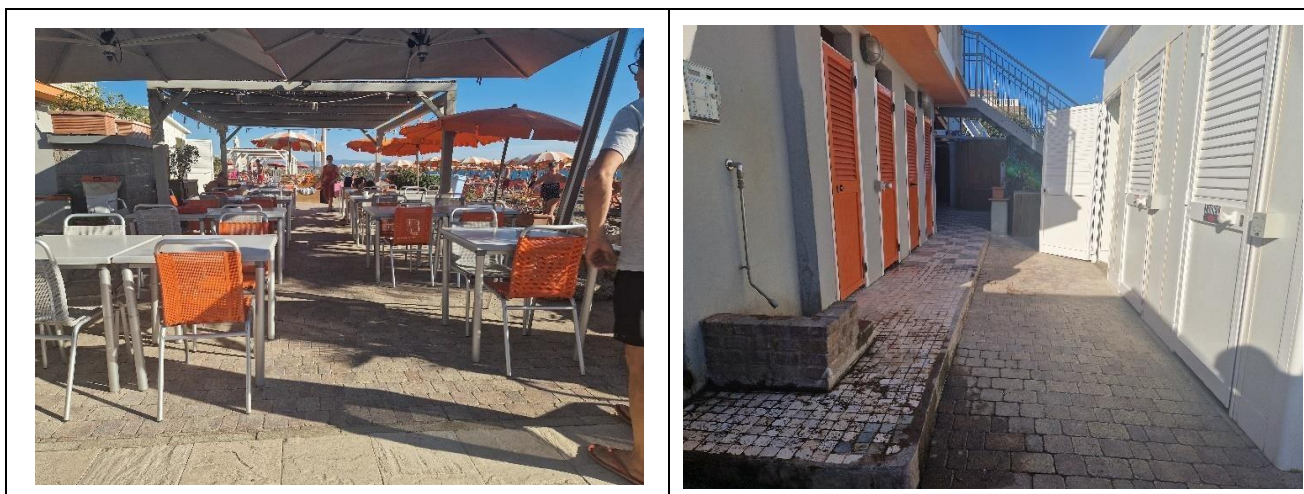
Types of tables	with central support
Space underneath the tables from the floor	more than 71 cm
Multilingual menu	Not detected
Menus with large print fonts	NO
Braille menu	NO
Table service for people with disabilities	YES
Availability of gluten-free food	<input type="checkbox"/> bread, pasta, biscuits, ice cream <input type="checkbox"/> <input type="checkbox"/> <input checked="" type="checkbox"/> <input type="checkbox"/> Pre-packaged foods
	

Internal Pathways and common services

Internal Pathways

Indicate whether the pathways connecting the entrance to the beach are flat or with ramps in addition to those already described	Flat paths
--	------------





Toilet and shower accessible to guests with reduced mobility

Number of toilets accessible/usable by guests with reduced mobility	2
Access to the premises	via ramp length 60 cm, width 111 cm, gradient 5.6 %
Usable width of the entrance door	78 cm
Toilet height	51 cm
Open front toilet seat	YES
Support handles	on both sides
Flexible hand shower at the side of the toilet	YES
Free space on the sides of the toilet	left more than 90 cm right 21 cm frontal more than 90 cm
Electric doorbell/phone	YES
Washbasin with space underneath for wheelchair	more than 69 cm
Height from the ground on the bottom edge of the mirror	sufficient for use by wheelchair users
Baby changing table	NO

Project carried out with the contribution of the





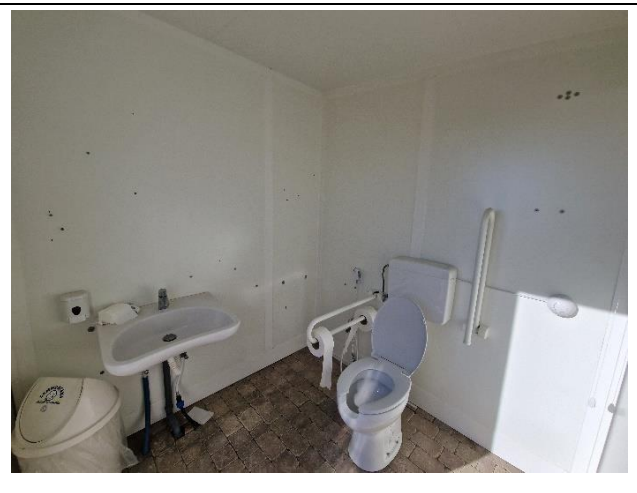
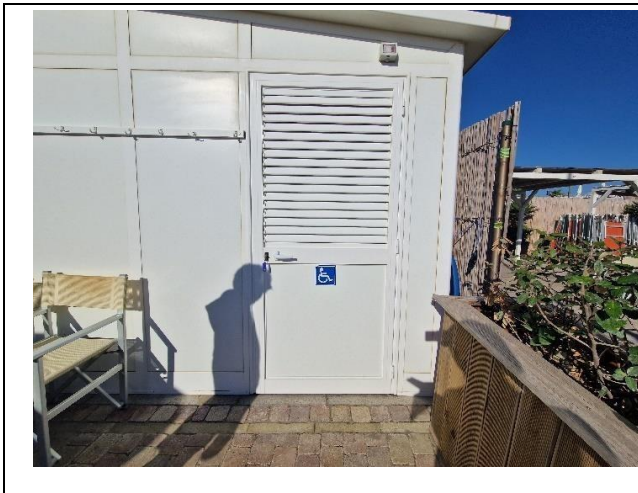
<p>Accessible shower available for guests with reduced mobility</p>	<p>SI separated from the toilet room</p>
<p>Access to the shower room if separated from the toilet room</p>	<p>Flat</p>
<p>Useful width of the door/entrance gate if separated from the toilet room</p>	<p>90 cm</p>
<p>Shower type</p>	<p>open-type</p>
<p>Floor-level shower</p>	<p>YES</p>
<p>Shower chair</p>	<p>Convenient</p>
<p>Grab bar</p>	<p>YES</p>
<p>Presence of shower head or ups and downs</p>	<p>Sliding rails with lowest point height 79 cm</p>
<p>Electric doorbell/phone</p>	<p>NO</p>





<p>Outdoor toilets</p>	<p>1</p>
<p>Access to the premises</p>	<p>via ramp length 60 cm, width 111 cm, gradient 5.6 %</p>
<p>Usable width of the entrance door</p>	<p>78 cm</p>
<p>Toilet height</p>	<p>51 cm</p>
<p>Toilet seat with open front tooth</p>	<p>YES</p>
<p>Support handles</p>	<p>on both sides</p>
<p>Flexible hand shower at the side of the toilet</p>	<p>YES</p>
<p>Free space on the sides of the toilet</p>	<p>left more than 90 cm right 21 cm frontal more than 90 cm</p>
<p>Electric doorbell/phone</p>	<p>YES</p>
<p>Washbasin with space underneath for wheelchair storage</p>	<p>more than 69 cm</p>
<p>Height from the ground on the bottom edge of the mirror</p>	<p>sufficient for use by wheelchair users</p>
<p>Baby changing table</p>	<p>NO</p>







Changing room

Accessible changing room available for guests with reduced mobility	YES, it coincides with the shower room
Access to the premises	Flat
Usable door/entrance width	90 cm
Size of the dressing room	width 214 cm and depth 335 cm
Presence of a cot	NO
Coat rack height from the ground	Missing coat rack

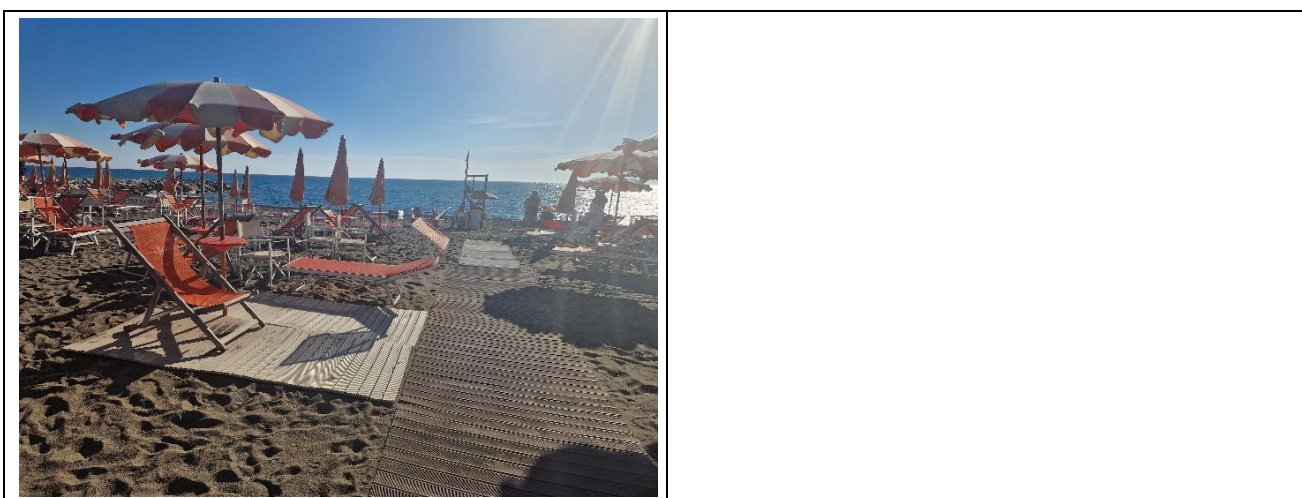




Beach

Type of beach	sand
Access to the beach	Flat
Walkway to reach the umbrellas	YES
Type of walkway	wood
Walkway width	120 cm
	
Removable Platform between the walkway and the umbrella station to facilitate the passage and parking wheelchair	YES
Amphibious beach chair available for helping people with reduced mobility to enjoy swimming (owned by the establishment or by association)	YES





Children's play area

Children's play area	missing
There are games for children with reduced mobility	NO

Swimming pool

The property has a swimming pool	NO
----------------------------------	----

Doctors' Offices/Healthcare Facilities

Hospitals near the facility	Ospedale di Cecina Via Montanara, n. 52 B, 57023 Cecina LI - 0586614111
Other Healthcare Facilities	Tourist medical service Viale Galliano Marina di Cecina Tel. 0586611666 (h. 20-8)

TESTED BY: **Handy Superabile Social Promotion Association in summer 2023**

Project carried out with the contribution of the

